

Accommodation details

The vacation apartment is completely finished and equipped.

kitchen: refrigerator, ceran cooktop panel, oven, dishwasher, coffee maker, electric water boiler, toaster, electric egg boiler, electric bread cutter, hand mixer

living room: dining table with 4 chairs, sofa bed (size approx. 160 cm x 200 cm), 2 armchairs, cable TV, HiFi

sleeping room: double bed (size approx. 180 cm x 200 cm), wardrobe, iron, ironing board; space for optional portable crib or folding bed (size approx. 80 cm x 200 cm)

bath room: bathtub/shower, laundry

Rates 2009

1st guest	50 Euro / night
each additional guest	10 Euro / night
children up to age of 12	5 Euro / night
final cleaning	25 Euro

maximum occupancy: 4 persons

minimum stay: 3 night

discount for extended stay

linens and towels are supplied

free parking space

portable crib, children's high chair and/or folding bed upon request without additional cost



sunny balcony



fully equipped kitchen



daylight-illuminated bathroom



located
4th floor
with
elevator



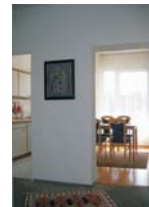
living room with sofa bed



dining area



cable TV, HiFi



corridor

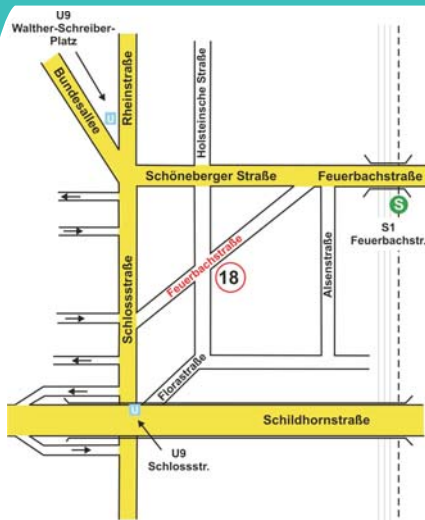


spacious sleeping room



The 2-room vacation apartment is located in the 4th floor of a well-maintained apartment building and is reached by an elevator. The apartment is very bright and sunny, has a balcony and is equipped with a daylight-illuminated bathroom and a modern fitted kitchen.





The S-Bahn station Feuerbachstraße or the stations Schlosstraße or Walther-Schreiber-Platz of underground line U9 are reached within 3 minutes on foot. From there direct and frequent connections e.g. to Potsdamer Platz, Unter den Linden, Friedrichstraße, Wannsee, Potsdam, Kurfürstendamm or Bahnhof Zoologischer Garten (Zoo) leave. Direct bus connections



Neighbourhood

the nonsmoking vacation apartment

Feuerbachstr. 18
12163 Berlin

is located at the south-western center of Berlin at the border between the districts Friedenau/Schöneberg and Steglitz.



Feuerbachstraße /
crossing Schlosstraße



Feuerbachstraße /
crossing Schöneberger Str.

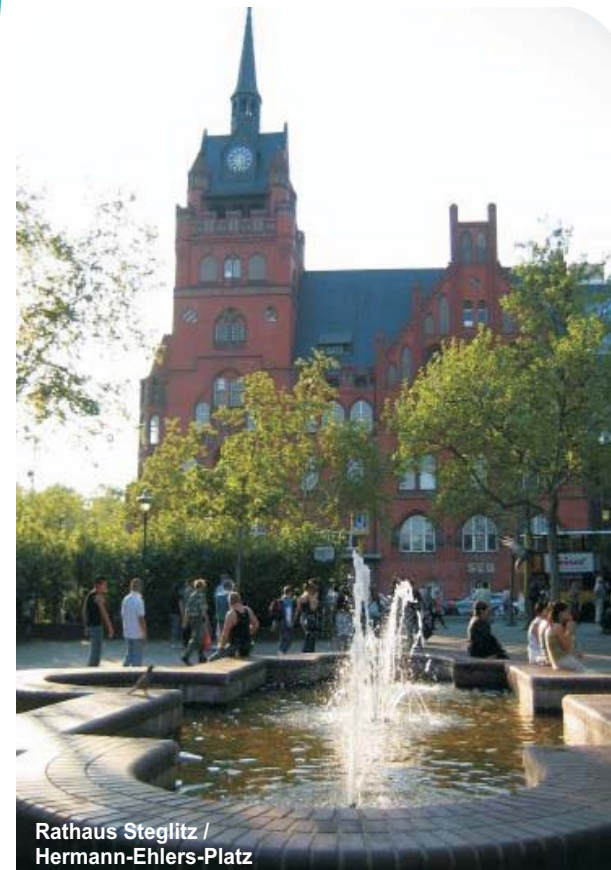
The Schlosstraße - one of the most popular and largest shopping street of Berlin - is at a distance of some 100 m. There, you find best shopping facilities of any kind. Restaurants, coffee shops and cinemas in the vicinity complement the variety. The connection to the public transport is best possible, thus the apartment is an excellent starting point for activities in Berlin and surroundings.

further information:

www.berlin-fewo-klein.de

Contact:
Fam. Klein
phone ++49 30 / 7924803
info@berlin-fewo-klein.de

Welcome to Berlin



Rathaus Steglitz /
Hermann-Ehlers-Platz

**We are looking forward
to welcome you in our
vacation apartment in Berlin.**

2 room nonsmoking apartment,
max. 4 persons
sunny and quiet, balcony
best connection to the public transport
excellent infrastructure in the vicinity
parking lot